



# **IP Television**

## **User Manual**

for software 5+

# Content

<b>Chapter 1</b>	<b>3</b>
Introduction.	3
WE APP TV! An overview about the applications.	3
<b>Chapter 2</b>	<b>4</b>
Playlists: what they are and where to find them.	4
<b>Chapter 3</b>	<b>5</b>
Channel uploading.	5
To upload or create your playlist	5
Auto Load Channels	6
Manual Load Channels	7
Paste M3U	8
Xtream Codes	9
<b>Chapter 4</b>	<b>10</b>
Use and management of playlists	10
Watch your playlist channels	10
Our extensions: the in-app purchase	10
Manage your playlists	11
<b>Chapter 5</b>	<b>12</b>
Our In-App: purchase and use of optional features	12
EPG – The Electronic Program Guide	14
Copy and paste playlists	15
Multiple playlists	15
Delete the advertisement	15
Zapping	16
<b>Chapter 6</b>	<b>17</b>
The player	17
The player of the live video	17
The player of the live video	18
<b>Chapter 7</b>	<b>19</b>
L’IMDB.	19
IP Television is connected with the most important worldwide database of movies and TV series.	19
<b>Chapter 8</b>	<b>20</b>
IP TELEVISION TODAY AND TOMORROW.	20
IP Television is constantly changing	20

# Chapter 1

## Introduction.

If you have just downloaded IP Television, you are ready to enjoy all the TV opportunities via IP with an app full of features: you can watch your favorite football team, your beloved series, the last Oscar movie or keep children quite during a trip with their preferred cartoons, anytime, anywhere!

## **WE APP TV! An overview about the applications.**

IP Television is a really simple and reliable app to use on smartphone, tablet and Apple TV. With IP Television, you can watch the channels of your Country, International broadcasters, dedicated channels or channels on demand.

You can watch it anywhere: you need only an Internet connection!

IP Television is constantly updated and offers lots of features and choices!

For example, you can:

- Insert more playlists and manage them easily
- Add channels in 4 different ways
- Use the EPG, the Electronic Program Guide
- Use the IMDB function on on-demand movies that gives you the information on plots, actors, producers collected from the most important worldwide database
- Delete the advertisement
- Set up the parental control
- ..... and much more.

If you have purchased IP Television for the tablet, you are also entitled to the version for smartphones or Apple TV without paying again.

Are you ready to turn your device into a new generation's TV?

Perfect! You just need to upload a channel playlist and the game has done!

# Chapter 2

## Playlists: what they are and where to find them.

To access the TV via IP you need to have a playlist and upload it on IP Television.

The playlists are files with an Internet address, called URL, of TV channels.

You can search for playlists on Google “m3u lptv” or on Facebook, where there are groups of playlists exchange, or on Twitter.

You can find free or paid playlists. You can also subscribe to one of the many services, e.g. “Xtream Codes”, that allows you to always have current and safe playlists access.

It is important that the playlists, you upload on the app, are always updated, because the channels often change their URL and you can have problems to watch them. Search for current playlists and often renew them (the advice we can give you is to set the search on Google of the last 24 hours).

If you are interested in a particular program, you can restrict your search, typing in the search bar, for example, “IPTV m3u.ts” for programs in streaming or “IPTV m3u.mkv” for programs on demand, such as the movies or “IPTV m3u *channelname*\*.ts” for a specific channel.

\*As *channelname*, write the channel you are looking for.

Now you are ready to upload your playlists. IP Television has four different ways of uploading (one completely automatic, usable also without the playlist). Learn more in the next chapter.

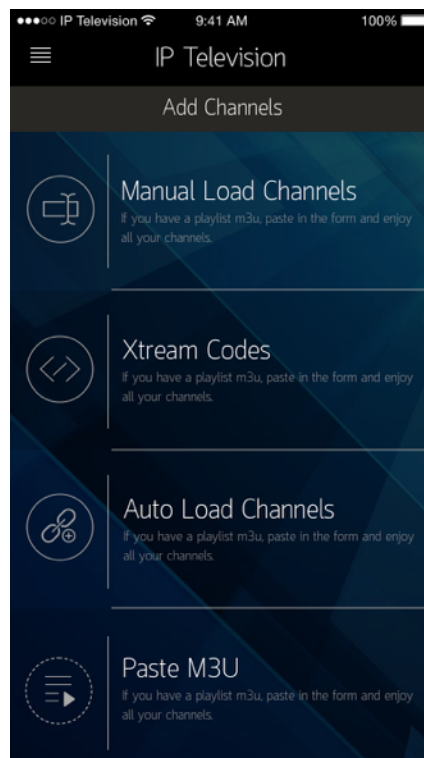
# Chapter 3

## Channel uploading.

### To upload or create your playlist

The first step to upload your playlist is to click the menu button (clicking the icon at the top left) and in “Settings” select “Add Channels”.

Here you can choose the uploading you prefer: Auto Load Channels, Manual Load Channels, Paste M3U or Xtream Codes. Let see them one by one.



## Auto Load Channels

This is the simplest way.

1. Touch “Insert the name of your playlist” and enter a name of your choice.
2. Select the language or the country of the channels you want to watch, e.g. “ITALIAN”.
3. Touch “Login”.

The app does everything alone: it downloads a channel playlist in automatic in the language chosen.

Now you are ready to watch it.

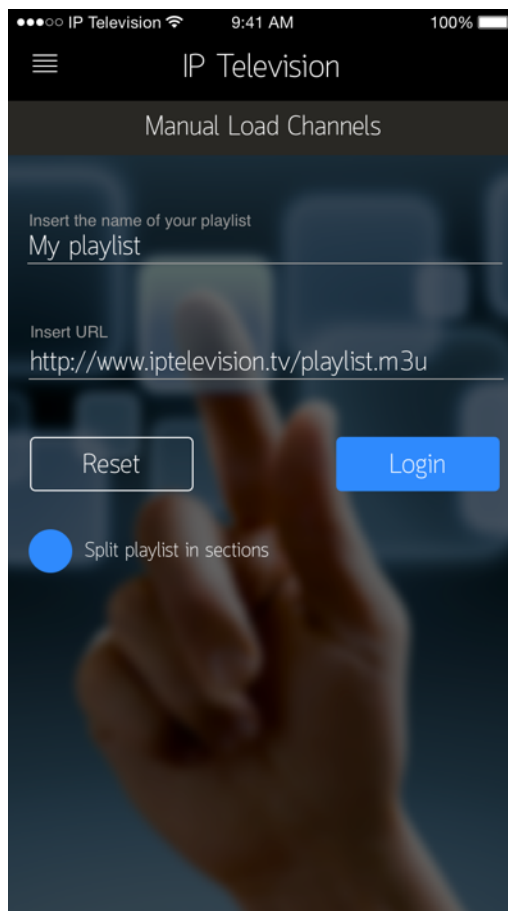
Important note: the channel list, obtained in this way, is managed by a web service not connected to IP Television, so we are not able to predict which channels are in the list and how they work.

## Manual Load Channels

You can upload playlists in m3u format, i.e. playlists that appear as a URL (a web address or a link of a website). If you have this kind of playlists (this is the classic form in which groups on Facebook exchange their playlists), you can upload them in this way:

1. Touch “Insert the name of your playlist” and enter a name of your choice.
2. Touch “Insert URL” and enter the complete address of your playlist (e.g. <http://address.com/filename.plist>).
3. Touch “Login”.

The app creates your playlist composed of channels contained in the m3u file.



## Paste M3U

You can upload a playlist in m3u format composed of a string, i.e. of many rows of links and codes. You recognize it because it starts with “#EXTMU”.

Follow these simple instructions to upload your playlist in this way:

1. Touch “Insert the name of your playlist” and enter a name of your choice.
2. Touch the big white box and copy (or paste) your playlist.
3. Touch “Login”.

The app creates your playlist composed of channels contained in the m3u playlist.



## Xtream Codes

It is dedicated to those who have chosen to subscribe to a paid service playlist such as “Xtream Codes”.

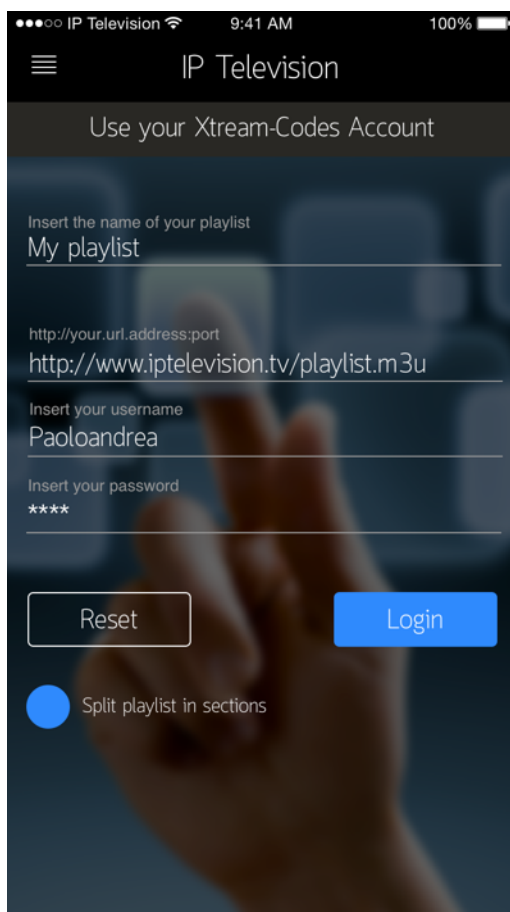
It works by placing the credentials received by the service provider.

Here how to do it:

1. Touch “Insert the name of your playlist” and enter a name of your choice.
2. Touch “http://your.url.address:port” and enter the URL of the service you have subscribed.
3. Touch “Insert your username” and enter the username used to access the service you have signed.
4. Touch “Insert your Password” and enter the password used to access the service you have signed.
5. Touch “Login”.

The app creates your playlist composed of channels provided by the Xtream Codes service.

When you insert your playlist, if you select the option “Split playlist in sections”, IP Television creates your playlist dividing the channels by type, e.g. CINEMA, SPORTS, etc.



# Chapter 4

## Use and management of playlists

Have you already uploaded your playlists? Are you ready to exploit the IP Television's power? Perfect.

What you need to do is to click the menu button, then click the icon at the top left and select "Your playlists". You see the full screen with all the playlists you have created. Now you can choose to watch your playlist channels or manage your playlists.

### Watch your playlist channels

If you want to watch a program or a channel, you need to touch the name of the playlist that contains it. Once opened, the playlist will appear as a channel list, with the logos and the names of every channel. Depending on how many channels you have in your playlist, you can see them all together on the screen, or you need to scroll down. Touch the name of the channel chosen to watch it.

### Our extensions: the in-app purchase

As you know, IP Television offers many features, some of them free of charge, other paid.

For example, if you subscribe to the EPG, the Electronic Program Guide, you see the information of the program transmitted and the one that will follow.

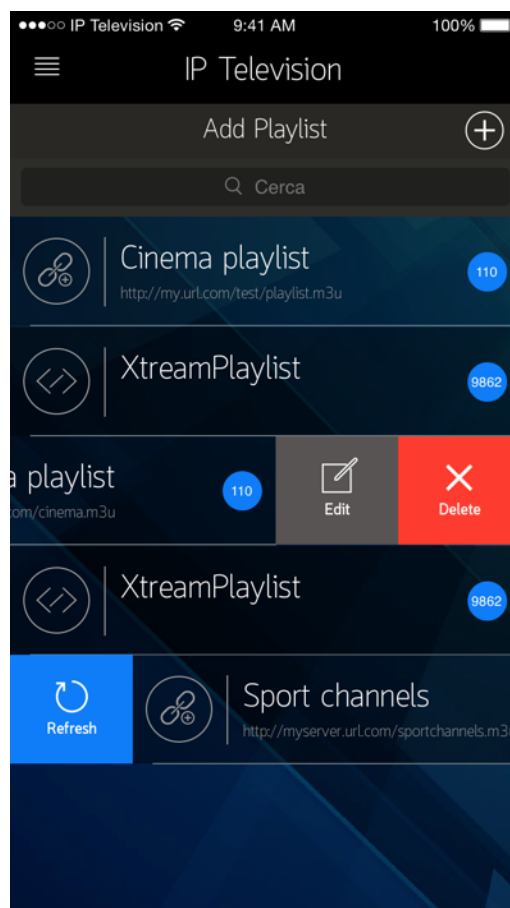
If you have bought the option "Zapping", once in the playlist, you can click the top right box and, every time you touch the name of a channel, a top small screen shows you what transmitted, so you can choose easily what to watch.

If you want to come back to the playlist screen, you need to touch the top left arrow.

## Manage your playlists

IP Television also offers the possibility to handle your playlist in an easy and intuitive way.

- If you want to update a playlist (compatible with this function), you need to enter the playlist screen and slide your finger from left to right starting from the left edge of the playlist chosen. It appears a blue box with written "Refresh". Touch it and the app updates the playlist in automatic.
- If you want to modify or cancel a playlist, you need to slide your finger from right to left starting from the right edge of the playlist. You can touch "Delete" to cancel the playlist or "Edit" to modify the playlist (e.g. cancel one or more channels in the playlist).
- If you want to remove some channels, you need to enter the playlist and slide your finger from right to left starting from the right edge of the channel chosen and touch "Delete".
- If you want to insert the Parental Control, slide your finger from left to right starting from the left edge of the channel you want to protect with a password. Touch "Parental Control" to activate. If you have not decided a password yet, click on "Setup" and write it down. If you want to remove the Parental Control from a channel, click "Parental Control" and then "Unlock".



# Chapter 5

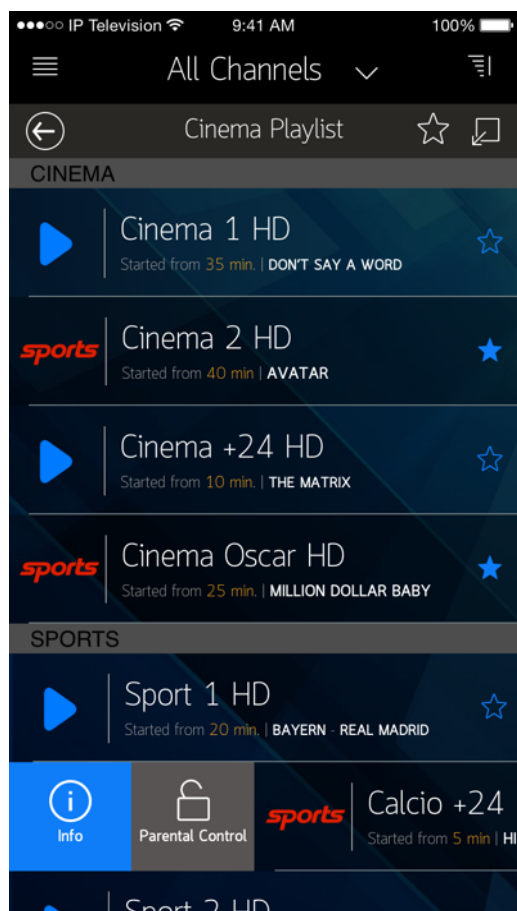
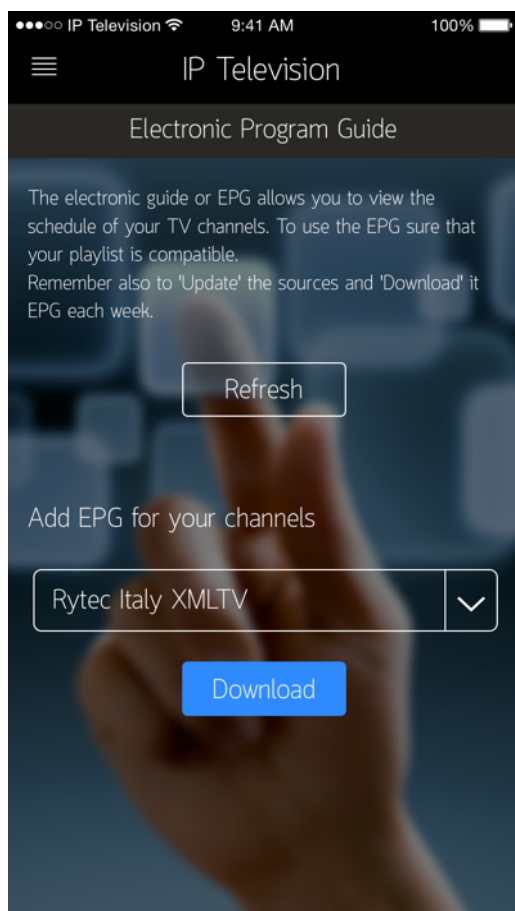
## Our In-App: purchase and use of optional features

IP Television has many optional features that make even more enjoyable your experience with our app.

To choose an in-app, you need to go to the main menu, click on the top left icon and select “Shop”.



Here you are in the screen where you can buy some useful optional features, including:



## EPG – The Electronic Program Guide

The EPG, the Electronic Program Guide, is a valuable resource: it is a real TV Guide, that allows you to see what a channel is transmitting and what comes next. In this way, you do not lose any interesting program!

Subscribe to our Electronic Program Guide and you will realize it is really of the highest standard: reliable, accurate, up to date. The EPG, kept to these levels, requires a demanding and continuous work to offer the best quality service.



## **Copy and paste playlists**

You can use the function Copy and Paste, during the creation of your playlists, without any limit, including also playlists of thousands of channels.

## **Multiple playlists**

The IP Television based version allows you to upload, manage or replace two channel playlists, how and when you want. Purchasing the function “Multiple playlist”, you can upload and manage unlimited playlists, without cancelling them.

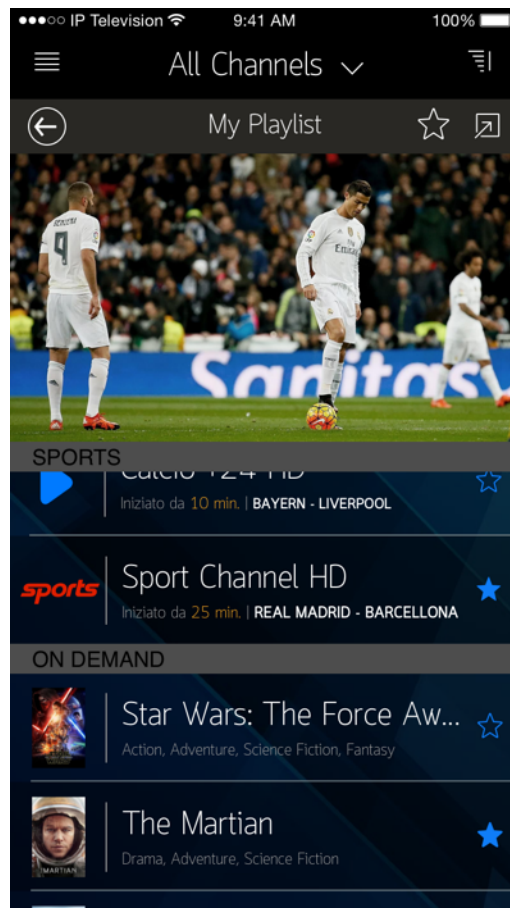
## **Delete the advertisement**

If the advertising box at the bottom bothers you, this function allows you to delete it forever.

## Zapping

The option “Zapping” gives you the possibility to open a small screen at the top edge of your playlist. In this way, you can see what a channel is transmitting and choose easily what you want to watch.

In the next future, we will create other features, some of them free of charge, other paid, always to improve your IP Television experience. If there are functions you wish to have, do not hesitate to contact us: we would like to satisfy all IP Television fans!





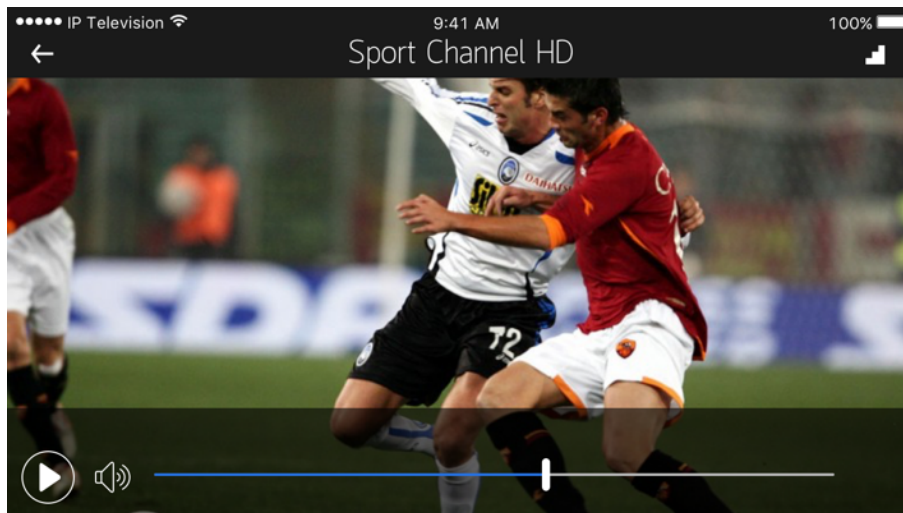
# Chapter 6

## The player

IP Television has been created to be very simple, easily understood and with many features. For example, in the player of channels in streaming or on demand, the top right icon allows you to select the image format you prefer: 4:3, 16:9, 16:10, 2.21:1, 2.39:1.

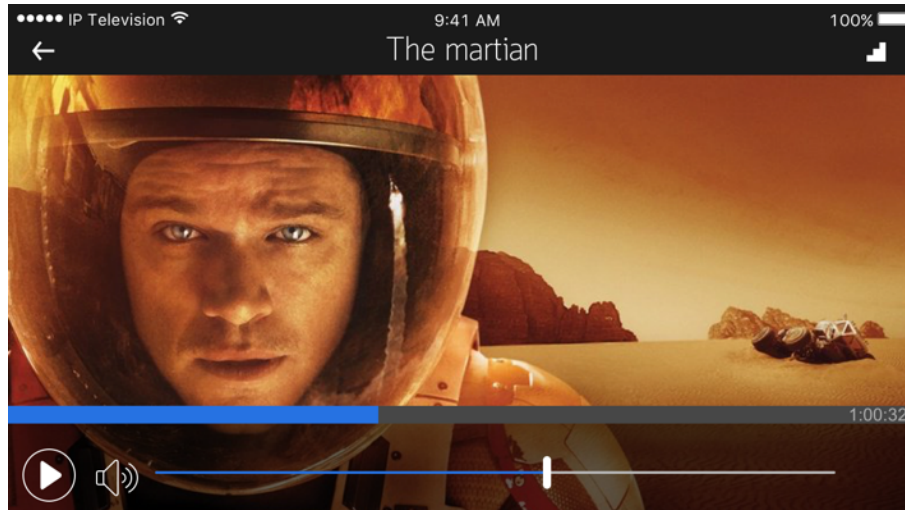
### The player of the live video

Here is how you see the player when you watch a program in streaming, as your favorite football team. Touch the volume icon at the left bottom and adjust it as you like.



## The player of the live video

In the player of the videos on demand, you can click “play” at the left bottom to pause or stop the program. You can also fast forward or rewind and watch a scene again.



# Chapter 7

## L'IMDB.

**IP Television is connected with the most important worldwide database of movies and TV series.**

We know that those, who love movies and TV series, love also being informed about plots, actors, producers. For this reason, IP Television is connected with IMDB, the most important, prestigious and worldwide database of movies and TV series.

IMDB is free of charge and allows, for movies on demand: to view the poster, to know if it is a comedy or a thriller or a documentary, to read the plot, to see which actors are playing, to find out the opinions of the viewers. An Oscar function!



# Chapter 8

## IP TELEVISION TODAY AND TOMORROW.

### IP Television is constantly changing

IP Television has many features and we will continue to add them to offer you a really unique television experience, anytime, anywhere.

Check our website [www.iptelevision.tv](http://www.iptelevision.tv) or follow us on Facebook: you will be updated about every news and you will see our tutorials that explain how to use IP Television and his features in a very simple way.

Remember to update the app, to have always the last version.

For every comment or request, do not hesitate to contact us: our team is ready to answer and give you an accurate and reliable service.